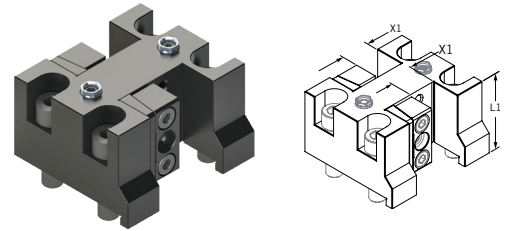


## VB/BOT12 Turret

### Bolt-On Tools for Haas DS-30 Lathes

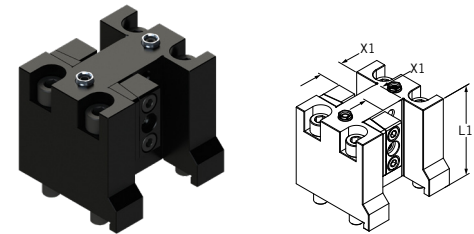
#### Twin Turning Tool Holders\*

Turret	Part Number	X1	L1
VB/BOT12	<a href="#">RBOT20OD1.00T</a>	1.00	2.15
VB/BOT12	<a href="#">RBOT20MOD25MMT</a>	25MM	55MM



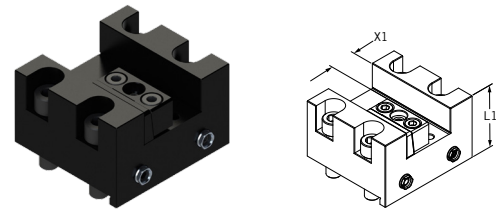
#### Extended Twin Turn Holders\*

Turret	Part Number	X1	L1
VB/BOT12	<a href="#">RBOT20EXTOD1.00T</a>	1.00	3.30
VB/BOT12	<a href="#">RBOT20EXTMOD25MMT</a>	25MM	84MM



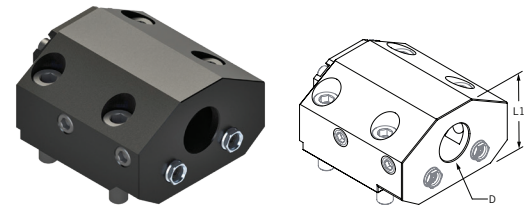
#### Face Groove Holders\*

Turret	Part Number	X1	L1
VB/BOT12	<a href="#">RBOT20FG1.00</a>	1.00	2.20
VB/BOT12	<a href="#">RBOT20MFG25MM</a>	25MM	56MM



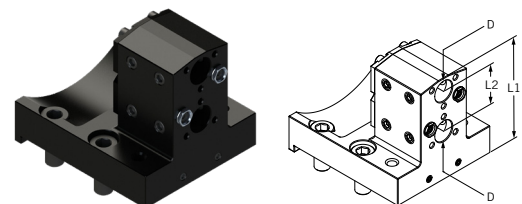
#### Boring Bar Holders\*\*

Turret	Part Number	D	L1
VB/BOT12	<a href="#">RBOT20ID1.00</a>	1.00	2.55
VB/BOT12	<a href="#">RBOT20ID1.25</a>	1.25	2.55
VB/BOT12	<a href="#">RBOT20ID1.50</a>	1.50	2.55
VB/BOT12	<a href="#">RBOT20ID2.00</a>	2.00	2.55
VB/BOT12	<a href="#">RBOT20MID25MM</a>	25MM	65MM
VB/BOT12	<a href="#">RBOT20MID32MM</a>	32MM	65MM
VB/BOT12	<a href="#">RBOT20MID40MM</a>	40MM	65MM
VB/BOT12	<a href="#">RBOT20MID50MM</a>	50MM	65MM



#### Twin Boring Bar Holders\*\*

Turret	Part Number	D	L1	L2
VB/BOT12	<a href="#">RBOT20ID.75T</a>	.75	3.80	1.50
VB/BOT12	<a href="#">RBOT20MID20MMT</a>	20MM	96.50MM	38.10MM



Coolant Option: **Internal Coolant\*** Coolant Option: **Internal Coolant/External Coolant\*\***